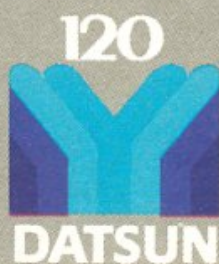


THE PERFECT
PUT-TOGETHER

AND Y IT IS.



Y it is so safe!

Every feature of the Datsun 120Y has been put together with the objective of ultimate safety. Unitary Body Construction assures a rigid passenger compartment and a controlled collapse rate. Standard safety features include a fully padded interior, breakaway mirrors, collapsible steering column and dual brake system.

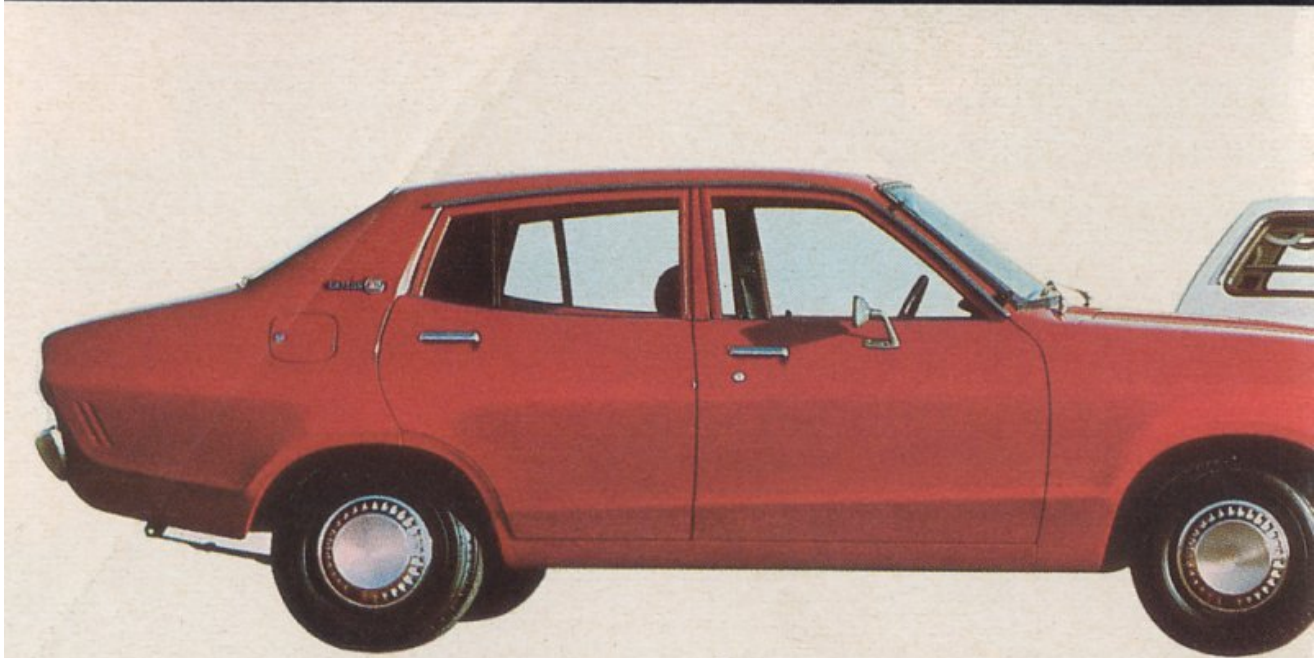
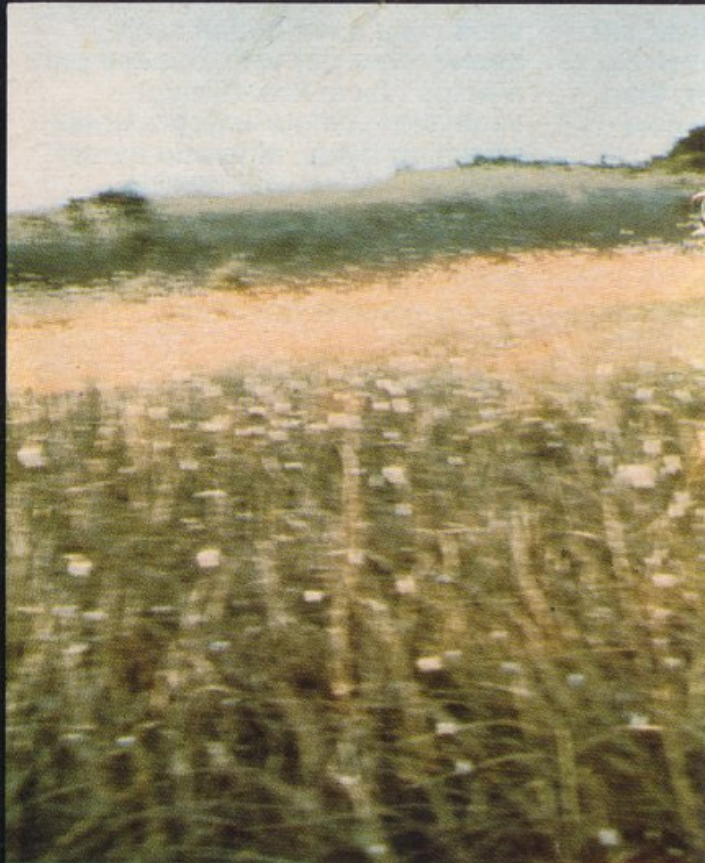
Datsun 120Y Coupe.

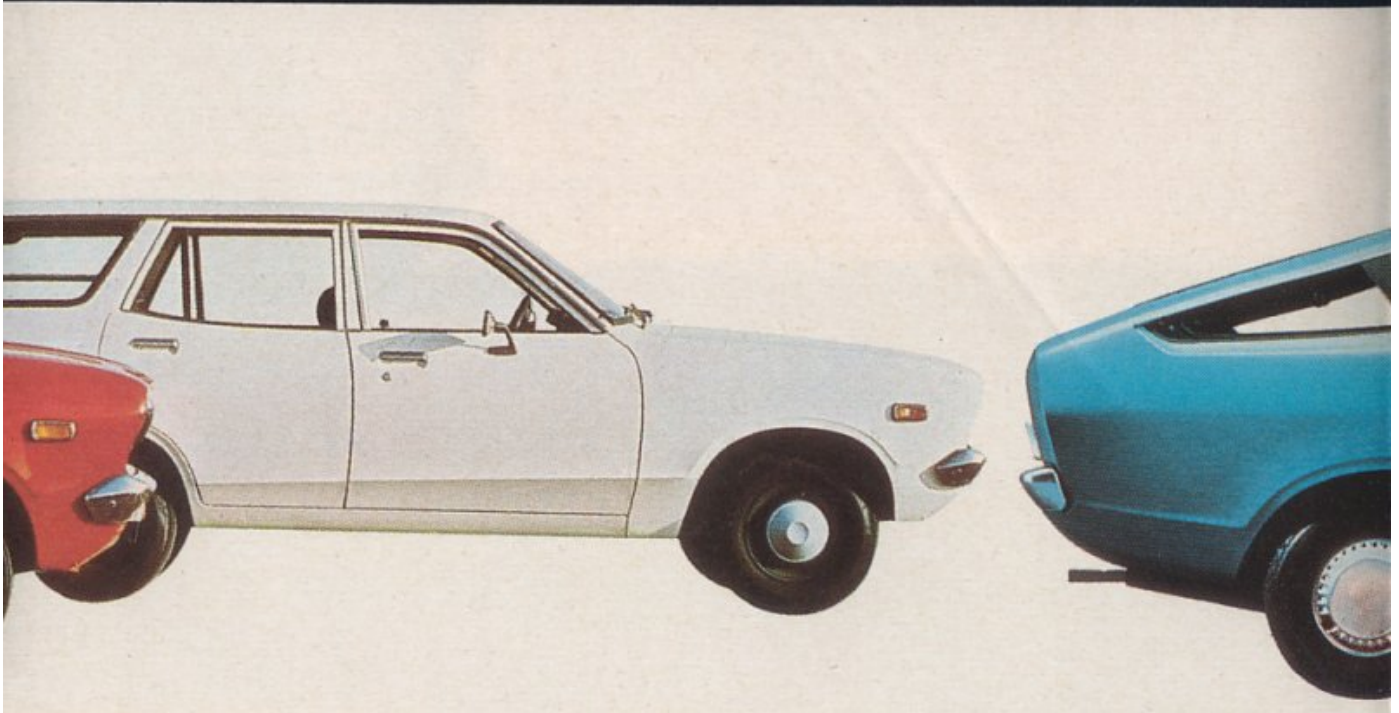
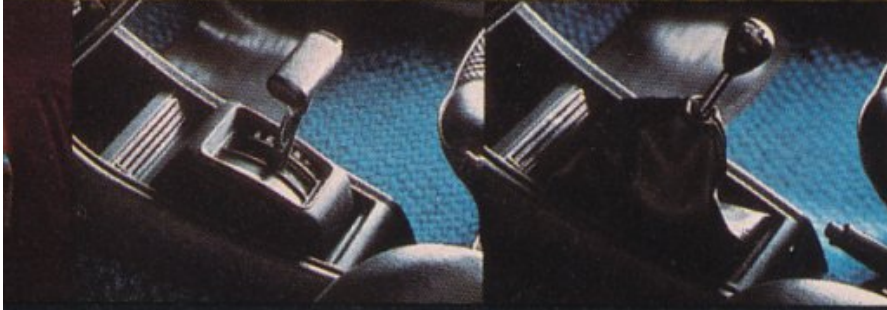
Just one look at the 120Y Coupe will be enough to convince you that it's destined to become Australia's most popular light Fastback.

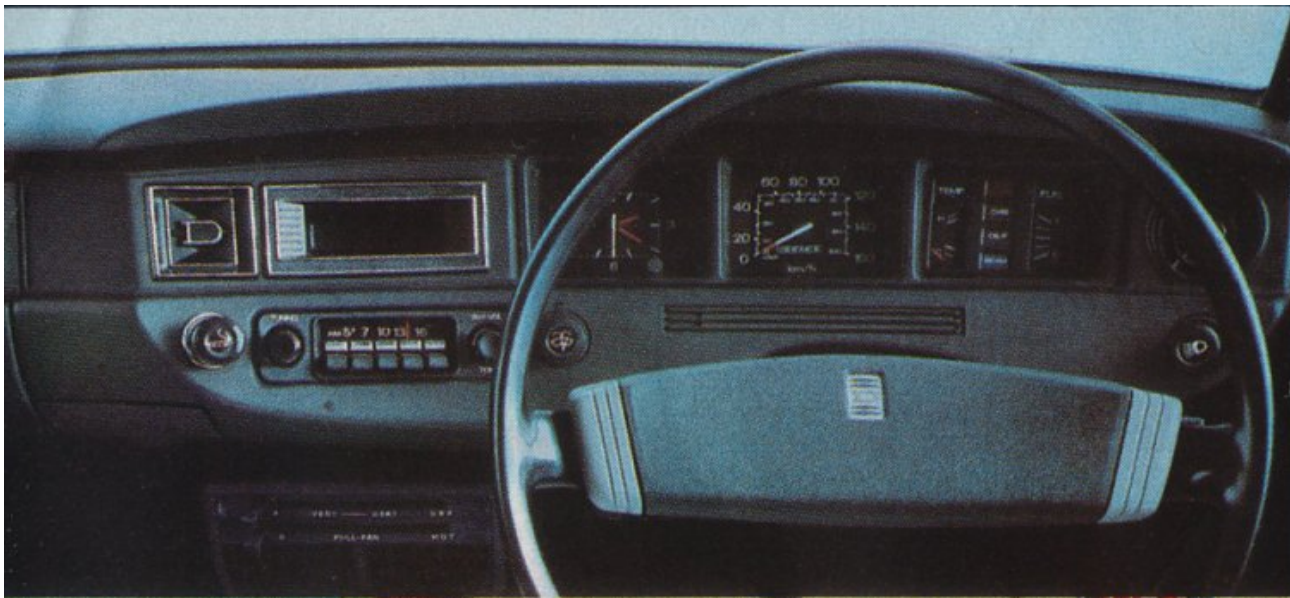
With the addition of radial tyres, disc brakes and tachometer, the Coupe is not just "good looks", its beauty is totally functional. For example: the rakish hatch back opens up to its full length. And with the rear seat folded flat, it's almost as big as a station wagon.

Datsun 120Y Wagon.

When all the styling and basic features of the 120Y Sedan are put together in a 5-door wagon, you get the best-looking, best-value Wagon in Australia. The rear door opens with a touch to reveal 54 cu. ft. capacity.







The Datsun 120Y Sedan and Coupe are available with 3-speed T-bar automatic or 4-on-the-floor manual. The Datsun 120Y Wagon is available only with 4-on-the-floor manual transmission. Test drive your choice of the Datsun 120Y range at your nearest Datsun Dealer.



Nissan Motor Co. (Australia) Pty. Ltd.

7641.3.74

